



# Sport-Tek® Ladies PosiCharge® Competitor™ Polo. LST550



Our #1 performance tee fabric offered in a color-locking, moisture-wicking polo to expand your uniforming options.

- 3.8-ounce, 100% polyester interlock with PosiCharge technology
- Self-fabric collar
- Removable tag for comfort and relabeling
- Taped neck
- Elongated 2-button placket with dyed-to-match buttons
- Set-in, open hem sleeves

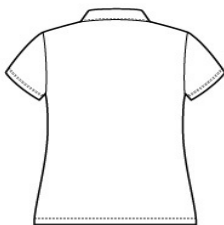
*Due to the nature of 100% polyester performance fabrics, special care must be taken throughout the printing process.*

### CARE INSTRUCTIONS

Machine wash cold with like colors. Only non-chlorine bleach. When needed tumble dry low, remove promptly. Cool iron if needed. Do not use softener. Do not dry clean.



front



back

### HOW TO MEASURE



**BUST**  
Measure under the arm and around the fullest part of the bust with arms down, keeping tape horizontal.

### SIZE CHART

	XS	S	M	L	XL	XXL	3XL	4XL
Size	2	4/6	8/10	12/14	16/18	20/22	24/26	28/30
Bust	32-34	35-36	37-38	39-41	42-44	45-47	48-51	52-55

### COLOR INFORMATION



Atomic Blue  
PMS 2203C



Black  
PMS NTR BLACK



Carolina Blue  
PMS 7454C



Iron Grey  
PMS 7540C



Maroon  
PMS 504C



Pink Raspberry  
PMS 7425C



Purple  
PMS 7672C



Silver  
PMS 429C



True Navy  
PMS 533C



True Red  
PMS 200C



True Royal  
PMS 7686C



White