

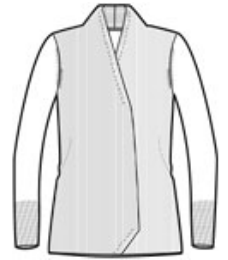


This soft, cozy cardigan sweater has a flattering drape and features fully-fashioned sleeves for strength and enduring wear. Stylish longer rib knit height details at cuffs and hem.

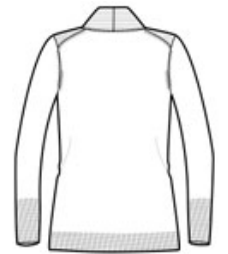
- 60/40 cotton/nylon
- Rib knit collar, cuffs and hem

CARE INSTRUCTIONS

Wash cold with like colors, non-chlorine bleach if necessary, lay flat to dry.



front



back

HOW TO MEASURE

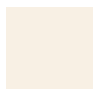



BUST
Measure under the arm and around the fullest part of the bust with arms down, keeping tape horizontal.

SIZE CHART

| | XS | S | M | L | XL | XXL | 3XL | 4XL |
|------|-------|-------|-------|-------|-------|-------|-------|-------|
| Size | 2 | 4/6 | 8/10 | 12/14 | 16/18 | 20/22 | 24/26 | 28/30 |
| Bust | 32-34 | 35-36 | 37-38 | 39-41 | 42-44 | 45-47 | 48-51 | 52-55 |

COLOR INFORMATION

| | | | |
|---|--|--|---|
|  Biscuit |  Black PMS NTR BLACK C |  Medium Heather Grey PMS 425C |  Navy PMS 532C |
|---|--|--|---|